



Evidence Collection

My Science e-Portfolio

Joshua Belcher: My Midterm Science Project

Home | **Project Background and Hypothesis** | Experiments | Conclusion

Project Background and Hypothesis

Hypothesis

Overview
Case Study
Research

Background, Purpose and Hypothesis

Plastic bags are made from polyethylene (PE) which is a polymer consisting of long chains of the monomer ethylene. Plastic bags are popular in our daily lives and have a harsh environmental impact on ecosystems. Every year, approximately 500 billion plastic bags are used worldwide and billions of those are dumped into the oceans. Countless wildlife, including sea-lions, whales, birds and turtles ingest the plastic bags and die every year. [View my PowerPoint Presentation](#)

Plastic bags have very high durability, persisting in the environment for 1000 years before they decompose. The development of a biotechnological approach to PE degradation is the main goal of this project. The hypothesis is that if PE-degrading microorganisms do exist in nature, then it will be possible to isolate them and use them for degradation of plastic bags. [View my research paper \(PDF\)](#)

[Show Comments](#)

Standards Correlation

Notifications | Assignments | **Standards** | Discussions | Students | Settings

LIST VIEW | GRID VIEW

Standards Grid [Add Standard](#)

STATUS KEY:

Not Met | Fulfilled | Pending | Awaiting Action | N/A

	Standard 2.3	Standard 1.2	Standard 2.4	Standard 1.1	Standard 3.1	Standard 1.5	Standard 2.2
Lisa Davis							
Mary Dunn							
Teresa Jones							
Dana Pauly							
Stacy Peters							
Brad Taylor							

Rubric Based Assessment

Names: School Vision Group Project Rubric

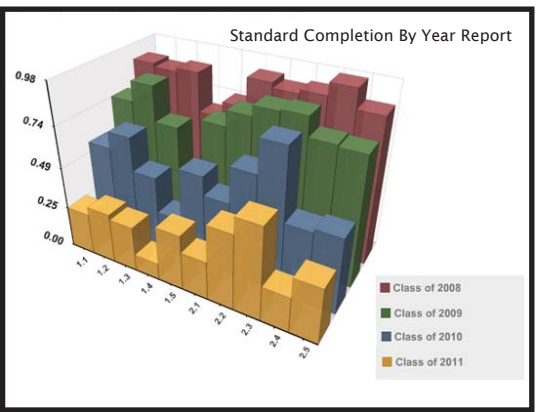
Add Row | Add Column

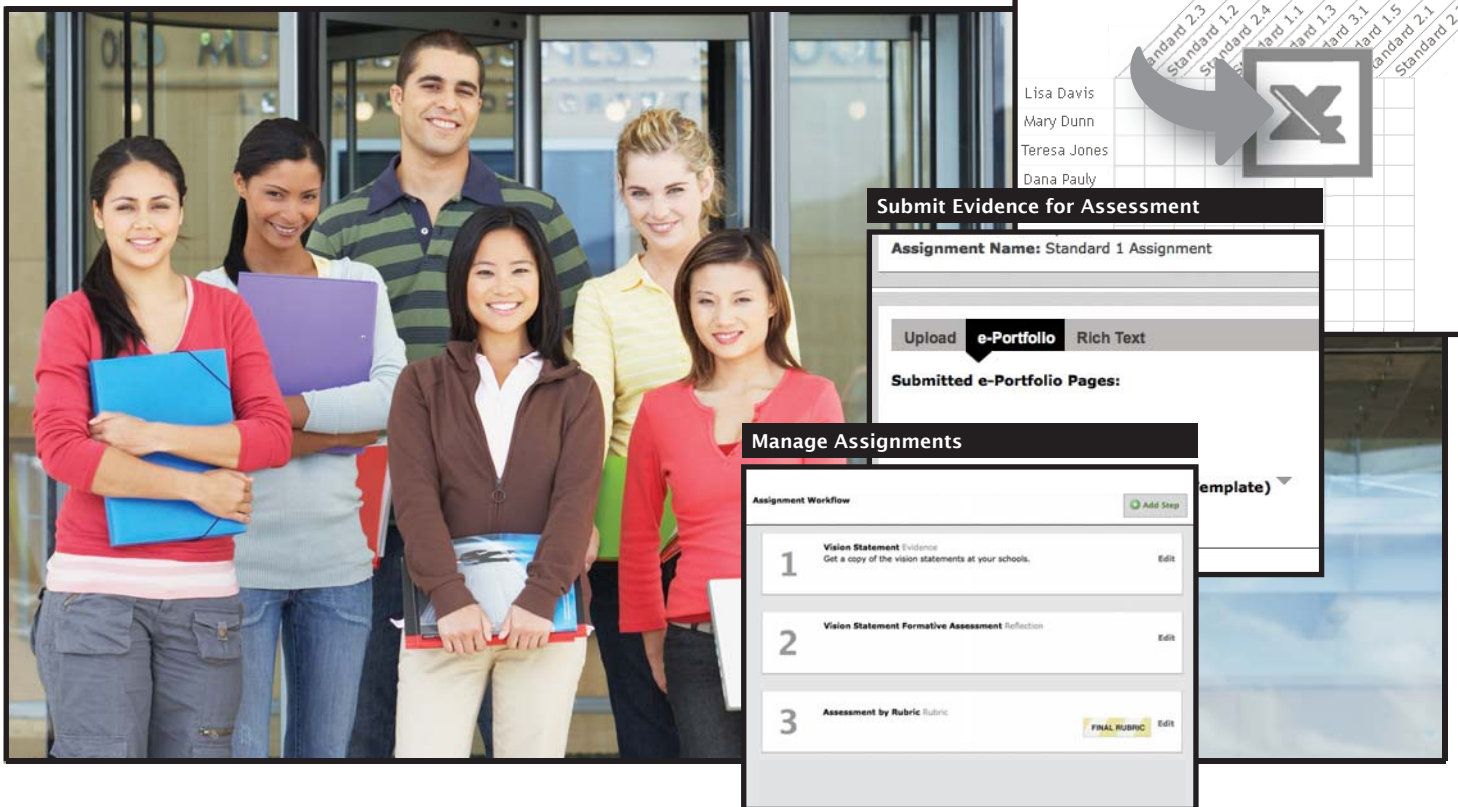
	Poor 0-75 delete this column	Proficient Phase 1 - ...
Phase I - Selection/Creation of Vision delete this row	Lacks collaboration; project driven only by one group member	Participation in reviewing vision statements; thoughtful and in-depth review; selection by consensus
Phase II - Assessment and Data Collection delete this row	Assessment based on insufficient amounts of information; school's population is not adequately represented in the collected information. delete this row	Assessment based on sufficient amounts of information, which is somewhat representative of school's population; some gaps in the data collection. delete this row
Phase III - Communication and Marketing delete this row	Weak communication and marketing plan; feasibility	Clear and feasible communication and marketing delete this row

DIGI[cation]TM

ASSESSMENT MANAGEMENT SYSTEM

Longitudinal Data Reporting





Digication Assessment Management System Features

Standards/Goals Manager

Create customized sets of standards, learning goals and objectives to facilitate mapping of standards and outcomes. Each set of standards/goals can be used for assessment through a school-wide library.

Rubric Builder

Create rubrics or modify existing rubrics from a school-wide library. Each rubric allows users to customize each assessment criteria as well as the level of achievement for each criterion. Connect rubrics to your classroom, program, or school's competency requirements based on your assessment needs.

Flexible Workflows

Easily create an assignment workflow consisting of a series of steps needed for a student to fulfill an assignment. The workflow can be edited based on your program or course processes and specifications using a simple drag and drop interface. Incorporate reflections, peer reviews, and other formative assessment tools, as needed. You can also add a summative assessment based on a rubric.

Submit Evidence in Integrated e-Portfolio System

Digication's award winning e-Portfolios are easily integrated into the Assessment Management System giving students a media-friendly solution to share and showcase work as evidence of learning for assessment. The Assessment Management System can also be integrated with your existing e-Portfolio system.

Formative & Summative Assessment

Facilitate formative assessment via written feedback and summative assessment via rubric. With Digication's Assessment Management System, assessment can be used as an authentic learning opportunity. Faculty can create assignment workflows that include peer/self reflection as well as faculty review. Rubrics are used for all summative assessments with the ability to correlate student work to standards/goals.

Customizable Reporting

Digication creates custom comparative and metrics reports based on your needs. This customization allows for flexible reporting capabilities for managing, aggregating, and presenting assessment results. You can use reports for accreditation, data analysis, and curriculum development purposes.